



Roots & Routes: A Vision for Community Engagement

Daniella Cook Sumpter, Ph.D.

Professor, Department of Teacher Education, College of Education
Affiliate Faculty, African American Studies, College of Arts & Sciences

Part of the legacy of people like Ella Baker and Septima Clark is a faith that ordinary people who learn to believe in themselves are capable of extraordinary acts, or better, of acts that seem extraordinary to us precisely because we have such an impoverished sense of the capabilities of ordinary people.

Charles M. Payne (1995)

I've Got the Light of Freedom:

The Organizing Tradition and the Mississippi Freedom Struggle



Root to Root

Carolinian Creed

The community of scholars at the **University of South Carolina** is dedicated to personal and academic excellence.

Choosing to join the community obligates each member to a code of civilized behavior.

As a Carolinian...

I will practice personal and academic integrity;

I will respect the dignity of all persons;

I will respect the rights and property of others;

I will discourage bigotry, while striving to learn from differences in people, ideas, and opinions;

I will demonstrate concern for others, their feelings, and their need for conditions which support their work and development.

Allegiance to these ideals requires each Carolinian to refrain from and discourage behaviors which threaten the freedom and respect every individual deserves.



Roots of Community Engagement Embedded & Celebrated at USC



2020 social justice award winners

Faculty, staff, student honored for community service

University Mission Statement

The mission of the University of South Carolina Columbia is to educate students through outstanding teaching and to provide research, scholarship, and service that drives community and economic impact for the benefit of the state, nation, and world.

Comprehensive Engagement



Community-
Based Research



Outreach,
Service and
Volunteerism



Community-
Engaged
Scholarship



Outreach,
Service and
Volunteerism



Civic Learning



My Vision

The University of South Carolina seamlessly integrates community engagement into its academic mission, fostering activities by faculty, staff, and students that are deeply rooted in our values, responsive to community priorities, and demonstrably beneficial.

The Roots (Principles):

- Reinforcing & Relational
- Meaningful & Material
- Values Driven & Valuable

Root 1: The University of South Carolina enhances **community engagement** by ensuring faculty, staff, and student **activities** are **reinforcing** and **relational**.



**Community-
Based Research**



**Outreach,
Service and
Volunteerism**



**Community-
Engaged
Scholarship**

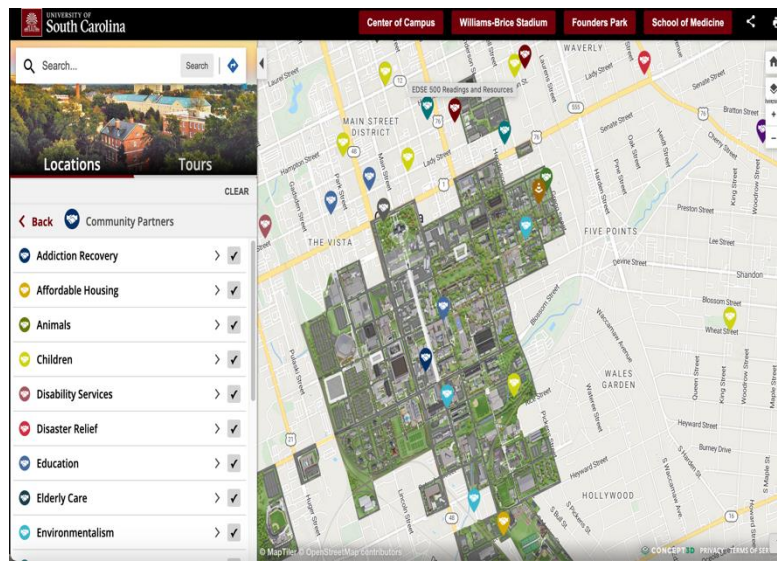


**Outreach,
Service and
Volunteerism**



Civic Learning

Root 2: The University of South Carolina enhances **community engagement** by ensuring faculty, staff, and student **activities** are **meaningful and material**.



Root 3: The University of South Carolina enhances **community engagement** by ensuring faculty, staff, and student **activities** are **values driven** and **valuable**.



Institute for Rural Education and Development

- Research Projects
- Faculty Researchers
- Awards and Outcomes
- SC Impact
- Strategic Partners
- About
- Contact

Rural school districts need a unique approach for incorporating STEM education and healthy development methodologies into their classrooms. Our collaborative, iterative research allows us to develop and measure new methods in conjunction with educators. Together, we expand on their school's strengths while working with their available resources to support students' futures.

A Comprehensive Approach to Rural Education and Healthy Development Research
Our research team focuses on the developmental health and STEM education exposure of rural students from early childhood through early adolescence, preschool through high school and beyond. School and career readiness is rooted in developmental milestones like motor function, social and emotional behavior and computational and literacy skills. Likewise, students' pursuit of STEM careers begins with awareness of and exposure to those fields from an early age onward.

By combining developmental skill building with STEM career opportunities in the classroom, we seek to create and measure new methodologies for rural schools as a collaborative team. We then test and iterate our findings in real classrooms alongside the real educators who teach in them.



From Roots to Routes: **Strategic *Plan* Approach to Community Engagement**



Create Engagement Hub

- * Foster interdisciplinary community engaged collaborations
- * Advances mutually beneficial exchange of ideas and knowledge



Establish Community Engagement Advisory Council

- * Drives consistent communication
- * Cultivates relational trust



Develop Interactive Digital Platform

- * Builds upon and expands existing efforts
- * Documents what is being done, where, by and with whom

Strategic *Plan* Approach to Community Engagement



Co-constructed



Connected to
engagement categories



Community & data informed

Roots guide our Routes

1. Informal collaborative spaces intentionally reinforce and relational efforts
2. **Meaningful and material engagement honors capacity**
3. Values shared accountability and decision making as valuable

GRACIAS
ARIGATO
SHUKURIA
JUSPAXAR
DANKSCHEEN
TASHAKKUR ATU
YAQHANYELAY
SUKSAMA
EKHMET
THANK
YOU
BOLZIN
MERCI
BIYAN
SHUKRIA
TINGKI
SPASSIBO
SNACHALHUYA
NUHUN
CHALTU
WABEEJA
MAITEKA
HUI
YUSPAGARATAM
DHANYADAAD
ANIMA
ATTO
UNALCHEESH
HATUR
SI
SPASIBO
DENKAUJA
NENACHALHYA
ENKURU
SIKOMO
MAKETAI
MIMMONCHAR
SANCO
KOMAPSUMNIDA
MAAKE
LAH
GRAZIE
MEHRBANI
PALDIES
MERCI
SPASIBO
DENKAUJA
NENACHALHYA
UNALCHEESH
MAKETAI
MIMMONCHAR
FAKAAUE
AGUYJE
GOZAIMASHITA
EFCHARISTO
GAJTHO
MERASTAWHY
TAVTAPUCH
MEDAWAGSE
BAIKA